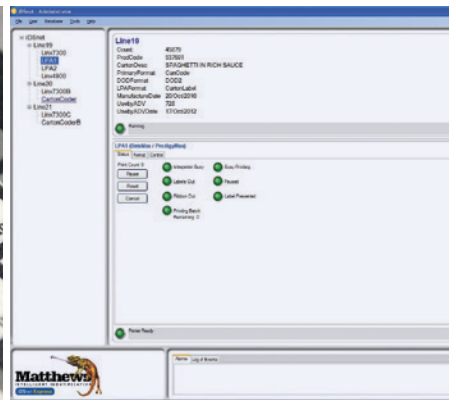


iDSnet Enterprise

Fully integrated product traceability solution

- Eliminate coding and labelling errors
- Centralise product identification management
- Increase production visibility and reporting
- Increase coding and labelling efficiency
- Enable remote fault diagnostics



What is iDSnet?

iDSnet is a Packaging Code Management (PCM) Solution that integrates all of your coding, labelling and other end of line packaging equipment like vision systems and scanners, to deliver a true product traceability solution throughout your business, creating a more streamlined operation.

How does iDSnet work?

By centralising control, iDSnet ensures that the correct code, such as a barcode, datecode or batchcode, is always placed on the correct product at the correct time. By networking all coding, labelling and other devices back to a central database, product changes are effected down an entire production line with one simple operator action.

What are the key features of iDSnet?

1 Central database:

All codes, product information and message formats are centrally created and managed making the message design, editing and change process efficient and easy.

2 Line Control:

Message changes for all the printers on a production line are quick and easy to do. The status of every connected device on the production line/s is visible in one central location and on the production line via a Communication Interface Module (CIM).

3 Scalable solution:

Our entry level iDSnet Express solution delivers all the benefits of a PCM solution. It can however be easily upgraded to iDSnet Enterprise for increased integration, efficiency and QA benefits.

4 Customisable solution:

The software can be tailored to meet the requirements of your plant and your processes. It can also integrate into your ERP/WMS systems to deliver increased efficiency gains.

5 Ease of Use:

The software has a simple and intuitive interface that makes it easy to use. Wizards are used for many set-up and design functions for fault free operations.



