

# Vision Inspection



## Now recalls are fewer - and labour costs are lower

Using camera and customisable computer software, vision technology automatically inspects your product and packaging so you minimise: rework, rejections and recalls.

And, when you use iQVision, an independent systems integrator, you aren't just guaranteed the best-fit solution from one of the industry's 5 leading brands (Cognex, Dalsa, Datalogic, Omron, Sick)—you also get the kind of expertise that can increase your profits.

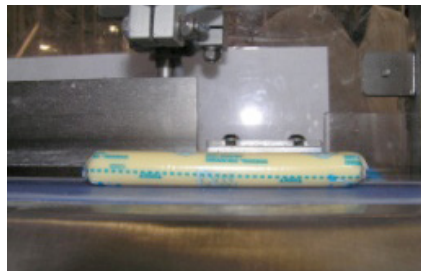
## Lower Waste and Increase Control: Vision Inspection Checks Product AND Packaging Criteria



### Packaging Quality

Check ID, Labels, Packaging Closures and Formations:

- Verify correct Trace and ID Codes: from use-by-date to 2-D barcodes.
- Identify front and back matching labels and match patterns
- Detect incorrect label applications or missing information early.



### Check Product Component

Presence and Formation:

- Inspect product form, length, colour or fill level.
- Count product numbers.
- Assess dimensions and surface integrity.
- Cap or lid presence, seal and fit, package tamper, type and colour.

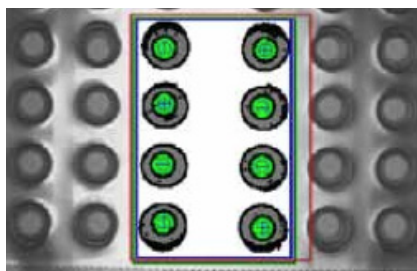


### Process Control

Automate product handling:

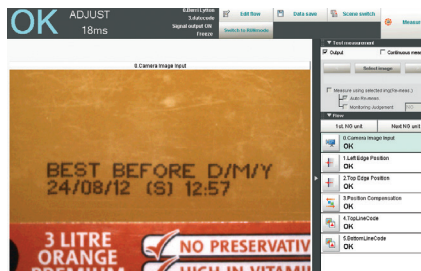
- Sort product based on colour, size, shape
- Stop the line to fix issues in-line
- Get data to improve process

## Want To Really Boost Your Line Efficiency? Camera + Software + Expert Integration



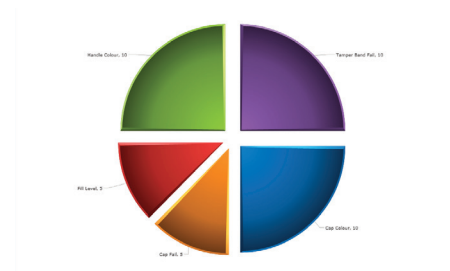
### Inspect Product Quality - without effort.

A fully formed, same-coloured pill must be in every bubble or an alarm will sound.



### Hands-Free: Check Packaging Integrity.

Scanning for matching front and back labels, correct batch code and tamper seals - only shelf-ready bottles are packed.



Collect data about product and packaging rejections so you can improve your processes.



code



check



capture

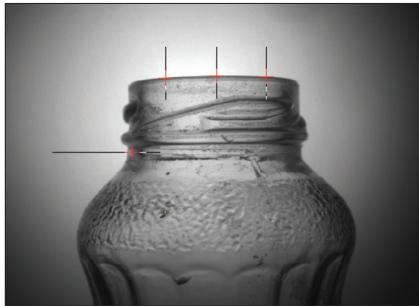


care 24x7

## Meet Any Product and Packaging Compliance Standard You Have: Even On High-Speed Production Lines.

By automatically inspecting the things you worry about, with cutting edge, real-time, affordable technology, Vision improves your Quality Assurance (Q/A), Process Control and Quality Control (Q/C) without increasing your labour costs.

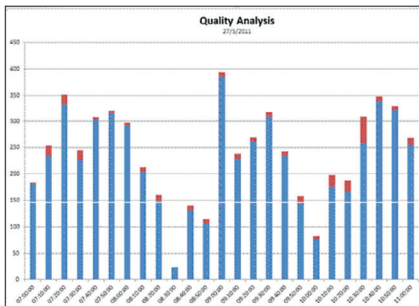
### How Vision decreases your manufacturing costs:



**There's less manual work to do:** Vision checks the criteria you want.



**Vision displays data in a user-friendly interface** and automates product rejection, or stops the line.



**Q/A and Q/C Line control:** iDSNet collects Vision's data to help you pinpoint line problems.

### How does Vision handle products and packaging that does not meet your criteria?

1. Vision photographs multiple angles of your product in line.
2. Using cutting-edge photo identification software, Vision assesses whether your criteria are met - even amongst multiple line changes.
3. Interpreting real-time data, Vision automates management of non-shelf-ready products by rejecting the product, stopping the line or setting off an alarm.
4. Realtime reporting software helps you identify causes of rejects to increase your profitability.
5. Integration with your Central Control System increases data captured so you can improve systems & processes and prevent long-term problems.



**iQVision: Tailor-designed, best-fit solutions for Australia's pharmaceutical, automotive, timber, and FMCG manufacturers.**

Independent to serve you better, and with the full power of Matthews Australasia behind iQVision you get True 24/7 in-house support.

Call 1300-478-474 for your Free "Size & Purpose" Site Audit to help you start minimising your rework, rejections and recalls.



code



check



capture



care 24x7